

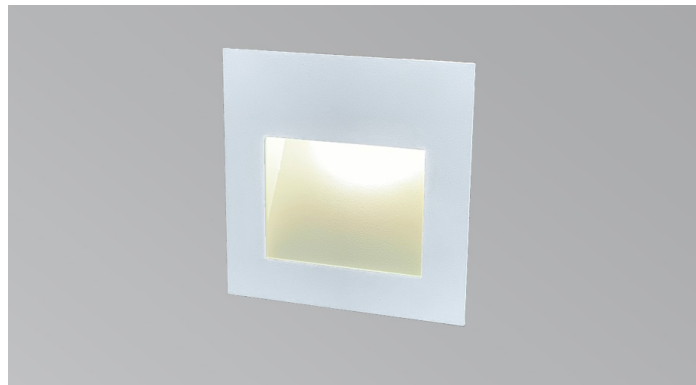
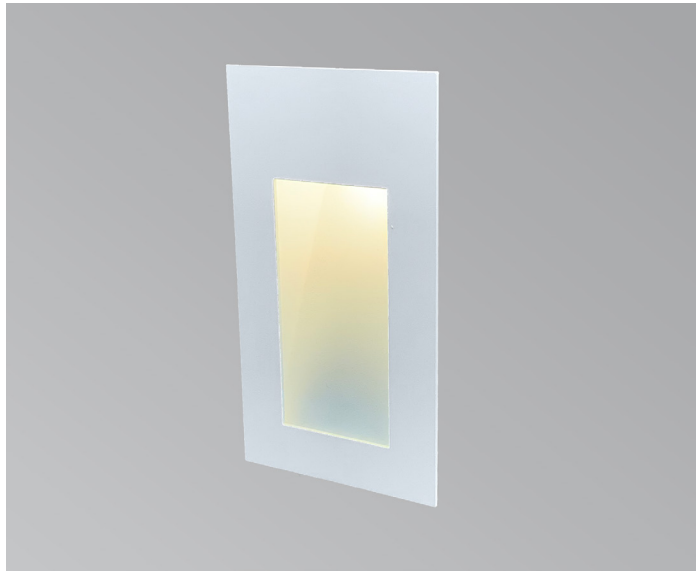
# CASCADA STEP LED

**FEATURES:**

- Australian designed & manufactured
  - Recessed wall/ step light
  - Aluminium & steel housing
  - Lumen option 180lm
  - Color consistency Mac Adam Step: 3 (<3SDCM)
  - Remote driver required
  - Specify – Dali dim
  - Colour temps available: 2700k / 3000k / 4000k
  - Serviceable IP20 wall light
- 
- Ideal for residential / hospitality / retail / gallery / museum / commercial applications
  - IES files available on request

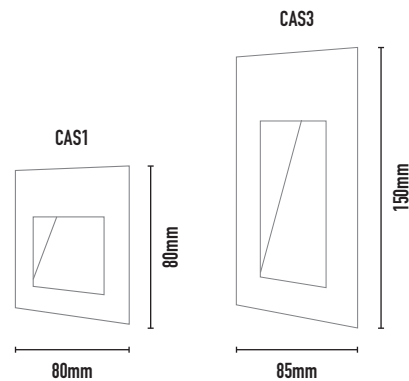
**COLOURS:**

- Black -2
- White -3
- Silver -6
- Custom -5



**DRIVER OPTIONS:**

- **UNIV20/350FP** - 1-8 fittings in series per driver, Non-dim
- **OTI10/350FP** - 1-8 fittings in series per driver, DALI dim



CODE	LAMP TYPE	WATTAGE	LUMENS	COLOUR TEMP	CRI	mA	DIMENSIONS
CAS12	LED	1W	180lm	2700k	80	350mA	80x80x59mm (square) - cut out 75x75mm
CAS13	LED	1W	180lm	3000k	80	350mA	80x80x59mm (square) - cut out 75x75mm
CAS14	LED	1W	180lm	4000k	80	350mA	80x80x59mm (square) - cut out 75x75mm
CAS22	LED	1W	180lm	2700k	80	350mA	150x85x59mm (vertical) - cut out 140x72mm
CAS23	LED	1W	180lm	3000k	80	350mA	150x85x59mm (vertical) - cut out 140x72mm
CAS24	LED	1W	180lm	4000k	80	350mA	150x85x59mm (vertical) - cut out 140x72mm