

MFL PINGO GU10 DOWNLIGHT

SKU# 177020, 177021

Rated Voltage 220-240V~ 50Hz

Thank you for purchasing this quality MFL product. To ensure correct function and safety, please read and follow all instructions carefully before using the product. Please keep instructions for future reference.

Warranty

- This light fitting is covered by a 5 year warranty. The warranty is from date of purchase, not the date of installation. Please retain proof of purchase and evidence of installation by a licensed electrician.
- Warranty will be void if there is any damage due to improper usage or modification to the fitting.
- Failure to comply with the instructions in this manual may increase the risk of damage or injury and will void warranty.

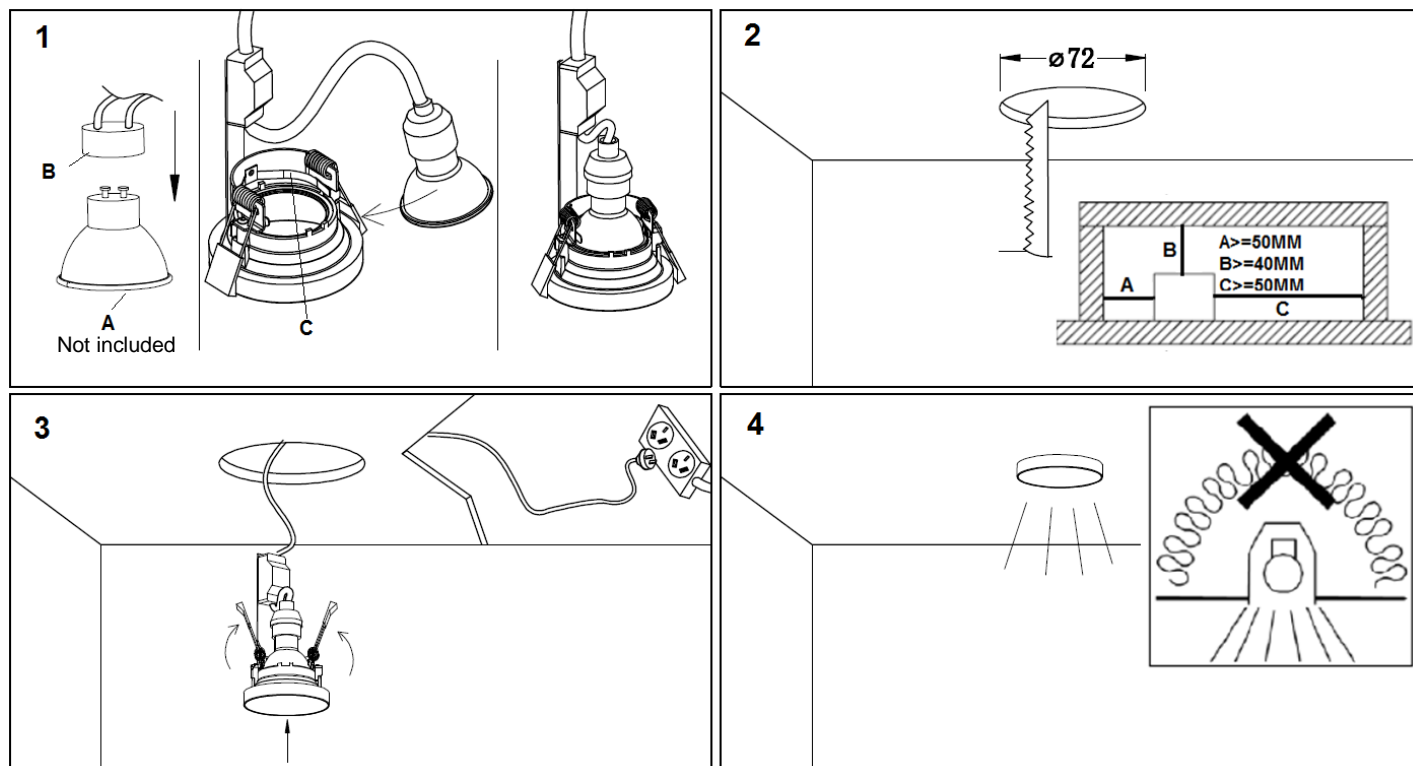
Installation requirements

- Must be installed by a licensed electrician.
- All wiring and installation of the light fitting must adhere to local and national wiring rules. eg. AS/NZS 3000:2007/Amendment 2:2012 Electrical installations.
- Select a suitable location for installation, the mounting point must support 2 times the weight of the fitting.
- This product is suitable for indoor use only.
- Ensure the fitting is not installed in direct line of an air vent/system.
- When installing a fitting in an area prone to moisture, ensure that the area is well ventilated and an appropriately rated exhaust fan is used if required. Damage or corrosion caused by moisture is not a product fault, and as such is not covered under warranty.
- Take care not to pull any electrical wires during unpacking as this may damage the connection.
- DO NOT cover the fitting with thermal insulation material.
- Lay out all the components on a smooth surface and make sure there are no components missing before assembling. If parts are missing, return the complete product to the place of purchase for inspection or replacement.
- Check whether the fitting has been damaged during transport. Do not operate/install any product which appears damaged in any way. Return the complete product to the place of purchase for inspection, repair or replacement.

Installation directions

1. Remove all packaging material from the product and be careful not to throw away accessories that may be hidden within the packaging material.
2. Install the globe (A - not included) into the lamp holder (B) and hold by spring clips of the fitting (C). Fig.1
3. Cut an installation hole of \varnothing 72mm into the ceiling. Fig.2
Ensure all the clearance values are maintained for the fitting. Please refer to the **CLEARANCE INFORMATION** section in the Fig. 2.
4. Connect the fitting plug to the socket outlet. Push the springs up and push the fitting through the cut-out hole and into the ceiling. Fig.3
NOTE: DO NOT cover the fitting with thermal insulation material. Fig.4

Installation Instructions



Safety tips

- Always ensure the power is OFF and the fitting has cooled down before performing any maintenance, cleaning or adjustment to the fitting.
- To avoid injury or damage to the fitting, ensure that power leads and screws are secure before connecting the power.
- Ensure that the fitting does not come in contact with corrosive chemicals, etc.
- To clean, wipe with a damp clean cloth. Never soak the fitting with water.

Specifications

SKU #	177020	177021
Colour	White	Black
Insulation Class	Class II	
Rated Voltage	220-240V~ 50Hz	
Rated Wattage	Max. 35W	
Lamp Holder	GU10	
Weight	0.27kg	
Dimensions	H: 153mm Dia: 82mm	
Cut out size	Dia: 72mm	