

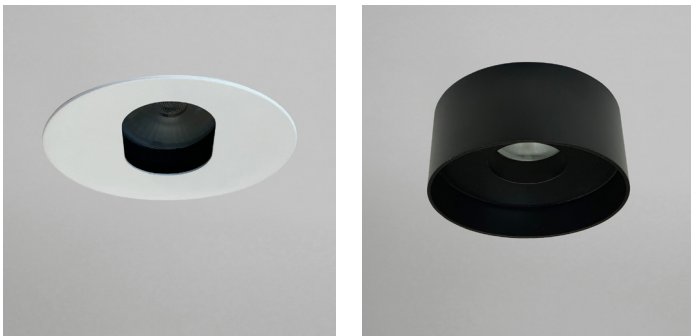
BEAMA MINI COB - PRO

- FEATURES:**
- Australian designed & manufactured professional recessed ultra-low glare recessed accent COB downlight
 - Offers low glare for discrete lighting and beam control without compromising the LED light source.
 - Pinhole fixed or Adjustable 40°
 - Lumen options 980lm up to 1510lm / CRI 80 / CRI 90
 - Requires remote electronic driver.
 - Specify – Non-dim / Phase-cut dim / Dali dim
 - Dali dim 100% - 0.1% option available on request.
 - Casambi bluetooth wireless mesh control system available on request
 - Colour temps available: 2700k/3000k/4000k
 - Serviceable IP20 downlight
- Ideal for commercial / hospitality / retail / gallery / museum / residential applications

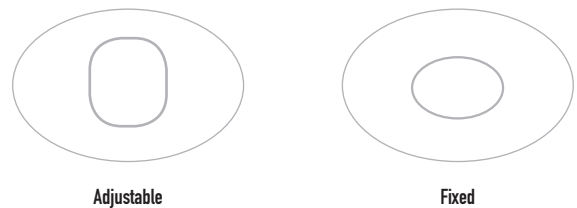
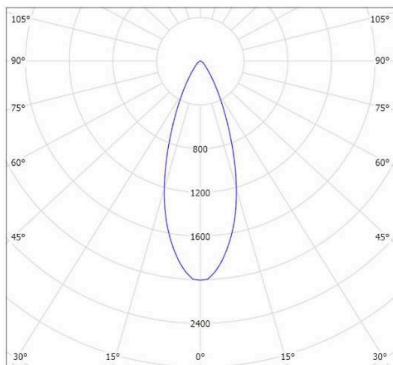
TRIM COLOURS:

| | | | |
|---|--------|----|-------------------------|
|  | Black | -2 | Inner standard as Black |
|  | White | -3 | |
|  | Silver | -6 | |
|  | Custom | -5 | |

- ACCESSORIES:**
- Frosted glass 30mm (FG)
 - Deco colour glass 50mm (DG)
 - Honeycomb filter (AL20)
 - Semi surface mounted round trim (MNBA003 - Colour)



40 DEGREE



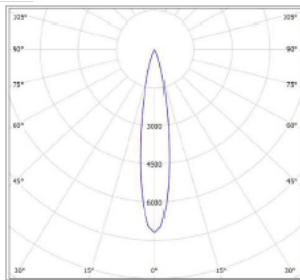
| CODE | TYPE | WATTAGE | LUMENS | COLOUR TEMP | BEAM ANGLE | CRI | mA | DIMENSIONS |
|---------|------------------------|---------|--------|-------------|------------|-----|-----|--|
| BMM5013 | Fixed - Pinhole | 12.3 | 960 | 3000k | 15, 24, 40 | 90 | 350 | 90mm x 80mm high (112mm with rear cover) - 79mm cutout |
| BMM5023 | Adjustable - Oval slot | 12.3 | 960 | 3000k | 15, 24, 40 | 90 | 350 | 90mm x 80mm high (112mm with rear cover) - 79mm cutout |

PROFESSIONAL

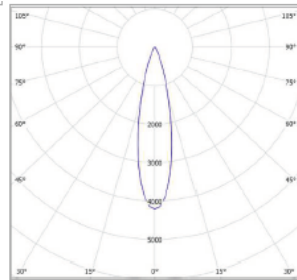
| CODE | WATTAGE | LUMENS | COLOUR TEMP | BEAM ANGLE | CRI | MA |
|--------------------------|---------|--------|-------------|------------|-----|-----|
| MC50-COB-900-927-15D-G1 | 12.3 | 980 | 2700k | 15 | 90 | 350 |
| MC50-COB-900-927-24D-G1 | 12.3 | 960 | 2700k | 24 | 90 | 350 |
| MC50-COB-900-927-40D-G1 | 12.3 | 920 | 2700k | 40 | 90 | 350 |
| MC50-COB-900-930-15D G1 | 12.3 | 1040 | 3000K | 15 | 90 | 350 |
| MC50-COB-900-930-24D G1 | 12.3 | 1020 | 3000K | 24 | 90 | 350 |
| MC50-COB-900-930-40D G1 | 12.3 | 980 | 3000K | 40 | 90 | 350 |
| MC50-COB-900-940-15D G1 | 12.3 | 1120 | 4000K | 15 | 90 | 350 |
| MC50-COB-900-940-24D G1 | 12.3 | 1090 | 4000K | 24 | 90 | 350 |
| MC50-COB-900-940-40D G1 | 12.3 | 1050 | 4000K | 40 | 90 | 350 |
| MC50-COB-1400-930-24D G1 | 12.9 | 1430 | 3000K | 24 | 80 | 350 |
| MC50-COB-1400-930-40D G1 | 12.9 | 1360 | 3000K | 40 | 80 | 350 |
| MC50-COB-1400-940-24D G1 | 12.9 | 1510 | 4000K | 24 | 80 | 350 |
| MC50-COB-1400-940-40D G1 | 12.9 | 1430 | 4000K | 40 | 80 | 350 |

- Color consistency Mac Adam Step: 3 (<3SDCM)
- High color rendering performance, CRI 80 and 90 (TM30 compliant) IES TM30

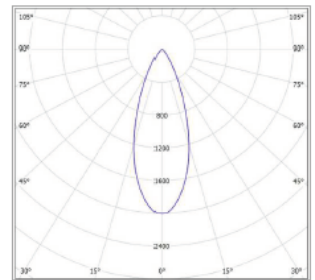
15 DEGREE



24 DEGREE



40 DEGREE



DRIVER OPTIONS:

- OTI / Dali dimmable
- OTE / PhaseCut
- OT / Non dimmable