

ELIPSO SERIES II

- FEATURES :**
- Australian designed & manufactured
 - For integral or remote transformer
 - Adjustable 180° tilt 359° swivel
 - Mounting: ceiling plate (CP2), hook clamp (HC), 1C track adaptor (GB67), 3C track adaptor (3C), fixed point mount (FX)
 - Ideal for applications such as retail, gallery and entertainment lighting

- COLOURS :**
- | | | |
|--|--------|----|
| | BLACK | -2 |
| | WHITE | -3 |
| | SILVER | -6 |
| | CUSTOM | -5 |

- EXTRAS :**
- Glass filter (GF)
 - Anti-glare louvre (DG)
 - Gobo holder (GH9000)



EL900TI+3C

EL900TR+GBT67

CODE

EL900TR

EL900TI

WATTAGE

20W-50W

20W-50W

LAMP TYPE

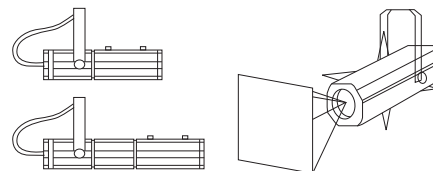
12V 10° MR16

12V 10° MR16

DIMENSIONS

145mm x 245mm

145mm x 325mm



Illustrated: shutter blades and twin adjustable lenses create various beam shapes